

## Importing Sample Race Video



### Downloading from the web or importing from your computer

Below are sample video clips that when played in your Trial Version will help you experience the many features of Eagle Eye software.

**Note:** In order for this process to work, you must first have the Eagle Eye Trial version installed on your computer

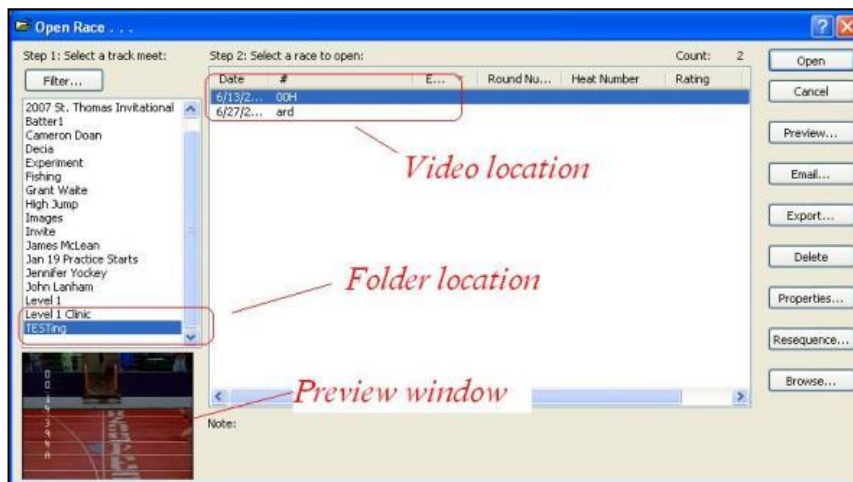
1. Place your mouse on **top of one of the images** below - or on a **download link** found on the web page.
2. Perform a RIGHT CLICK on the download buttons below and select **SAVE TARGET AS**.



3. Navigate to your **C drive** and select the **VIDEOS** folder.

Note: Eagle Eye automatically creates this file when the software is installed on your computer. This is your default capture folder. All video within this folder are available within the internal Eagle Eye software directory.

4. **Open Eagle Eye** and from the top toolbar (far left) select **FILE -OPEN** to bring up the following Directory.



5. Your downloaded video is shown in the upper blue bar. **Select OPEN**.

## Troubleshooting

### What to do if your imported video is jumpy and fuzzy



With video on the screen, press the **ENTER** key to bring up the RACE PROPERTIES box.

Make sure **PROGRESSIVE SCAN** is off (unchecked) and playback is set to 59.94.

**Tip:** This setting may become altered after importing video from another source.

